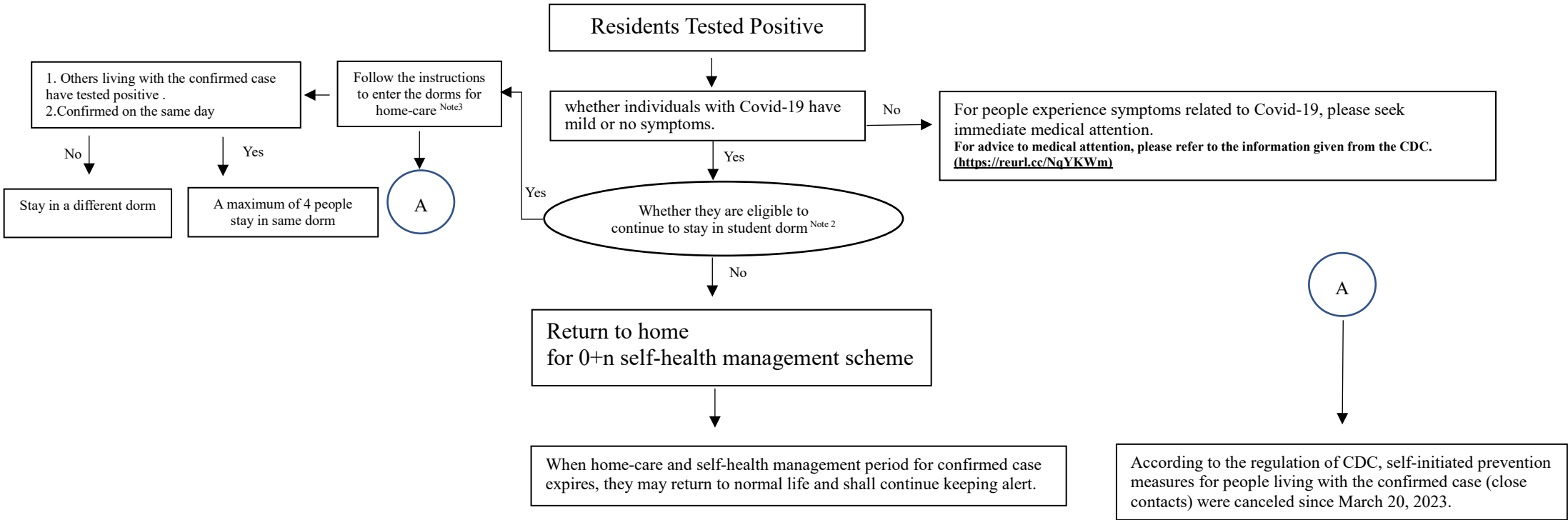


NCHU's Handling Procedures for Dormitory Residents Tested Positive Cases of COVID-19



Note 1: Oversea students who are living off-campus and are required to be quarantined or taken care of may apply to live in the isolation or home-care dorms at their own expense if they are eligible for an exception to stay on campus.

Note 2: The order of priority for those staying in student dorms is as follows: 1) Overseas students living off campus; 2) Overseas students living in campus; 3) Students from poor families (certification is needed); 4) Those who have household registration in Hualien, Taitung or outlying islands.

Note 3: Definition of dorms for home-care: Dorms for home-care are provided for confirmed-cases students and who have rapid antigen tested positive.

Note 4: During the self-health management period, people cannot go out for school or to work.
The calculation shall be 5 days starting from the day after the date they test positive on a rapid test. Under this scheme, they can end their self-health management period if they test negative on a rapid test.

Note 5: For those who stay in the dormitory for home-care, they are not able to move to their original room during the period.